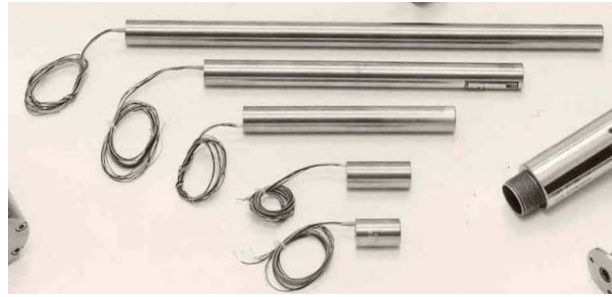


DM Series LVDT

(Displacement Transducer)



PREDICTIVE
MAINTENANCE
SYSTEMS



- Infinite Resolution
- 12V or 24V Models
- Configuration options
- Lightweight Cores
- High accuracy

The DM Series of DC/DC linear transducers cover the range $\pm 2.5\text{mm}$ to $\pm 50\text{mm}$ and are intended as a general purpose instrument. As with all other Sensonics LVDTs they are robustly housed with impregnated coils and internally potted so that they are suitable for use in the majority of industrial applications.

Uses include extensometers, hydraulic actuators, float positions, thickness measurements, geophysical parameters, earth movements...

The series is available with the lightweight core supplied as a basic unattached item (DMF) or with the core attached to an extension rod (DMG) or with the core and extension rod captive and spring loaded (DMS).

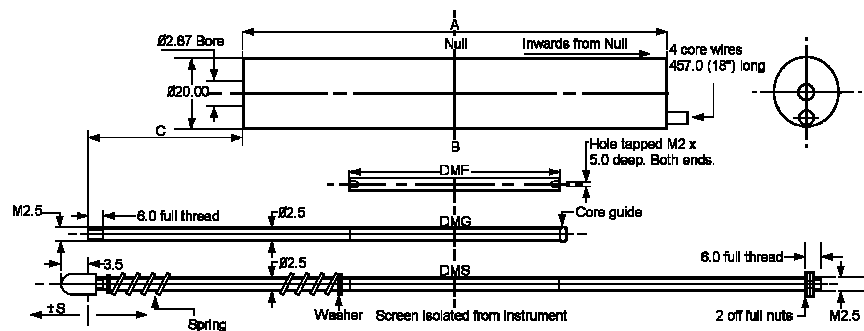
Other DC-DC series in the Sensonics range are:

DF Series $\pm 15\text{mm}$ to $\pm 50\text{mm}$

DE Series $\pm 25\text{mm}$ to $\pm 300\text{mm}$

the DF Series has a larger bore to core clearance' but a heavier core and the DE series has a heavier core and extension assembly which makes it more robust for it's longer stroke capabilities.

12V or 24V models in the DM series are available in any of the three configurations giving 30 Standard options



DS1181-1

SENSONICS LTD

Connections: Red input +VE 12V or 24 V D.C.
 Blue Input - VE
 Green output + VE going with core displaced
 inwards from NULL
 Yellow output -VE

Specification

Output Impedance.....5K
 Output Load.....50K
 Thermal Zero Shift (FRO/°C)..... Better than 0.005%
 Thermal Span Shift (FRO/°C)..... Better than 0.1%
 Output Ripple (FRO)..... Less than 0.5%
 Frequency response.....DC to 75Hz
 Input Current.....From 10 to 50mA
 Temperature Range.....0-80°C
 Linearity..... Better than ± 0.5% standard to± 0.25%
 by selection.

Ordering Information/Options

			12V or 24 V DC input models		From 10 to 26V DC input models		
			DM - 2.5	DM - 5	DM - 12.5	DM - 25	DM - 50
Stroke	S	± mm	2.5	5	12.5	25	50
	A	mm	44	57	87	153	220
	B	mm	20.3	20	30.15	76.2	94
	C	mm	23.5	31	46.5	63	110.5
Core Weight (gms)			0.8	0.8	1.2	3.1	3.8
Core + Extension (gms)			2.5	3	4.2	6.8	9.5
12V Excitation	DMF	Free core	IS 021	IS 023	IS 901	IS 904	IS 907
	DMG	Guided core	IS 022	IS 024	IS 902	IS 905	IS 908
	DMS	Sprung Loaded	IS 066	IS 067	IS 903	IS 906	IS 909
	Sensitivity ± 15%		± 3V	± 2V	± 2.6V	± 1.5V	± 4.2V
24V Excitation	DMF	Free core	IS 031	IS 033	IS 901	IS 904	IS 907
	DMG	Guided core	IS 032	IS 034	IS 902	IS 905	IS 908
	DMS	Sprung Loaded	IS 071	IS 072	IS 903	IS 906	IS 909
	Sensitivity ± 15%		± 6V	± 4V	± 5.8V	± 2V	± 9.6V

DS1181-1



Sensonics Ltd,
 Berkhamsted,
 Hert's, HP4 1EF,
 England
 Tel: +44(0) 1442 876 833.
 Fax: +44(0) 1442 876 477.